

R50

Complete User Guide

Visit kaiserbaas.com for more information

It is recommended that the R50 be mounted behind the Rear-view Mirror

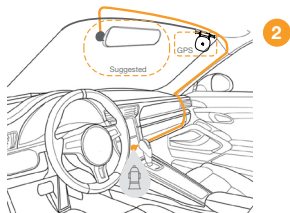
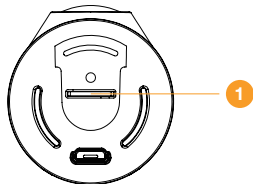
1

Insert the MicroSD card

2

This will allow the camera to be out of the drivers field of view, with the power cable around the outside of the windscreen.

Connect the GPS cable to the camera and plug it into the USB car charger. The R50 will automatically turn on and begin recording when the vehicle starts.



To take a photo using Hands Free Control, simply wave your hand under the R50

In the Kaiser Baas Drive App, select 'Photography with Video' within Settings to set up video recording. Your Dash Cam will save 5 seconds of footage from before and 5 seconds of footage after your gesture.

In these settings, you can also customise the Hands Free Control function to register your hand gesture from different lengths. Photos and videos can be downloaded to your smartphone from the Gallery Page.

The GPS module will track your location and speed to ensure that saved photos and videos are accurate.

For optimal positioning of the GPS module, it should be mounted as far away from the camera as possible, with an unobstructed view of the sky.

The camera will say "GPS Working" when it has a solid GPS signal.

Download the KB Drive App to get started

Open your device's WiFi settings and select the Dash Cam Network (KB-RSERIES-XXXXXX).

Use password 12345678 to connect.

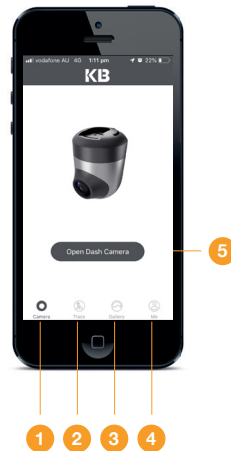
Once connected, open the app to see live video, track your journey, change camera settings or download captured footage and photos.



Join the Social Media Movement

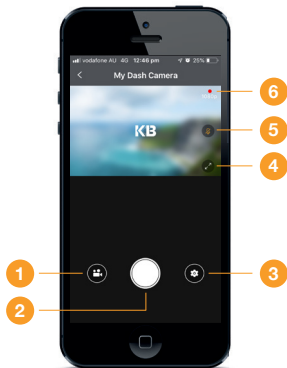
Home Screen

1. Home Screen
2. Route tracking
3. Local gallery
(Files downloaded to the phone)
4. Camera Info
5. Camera view



My Dash Camera

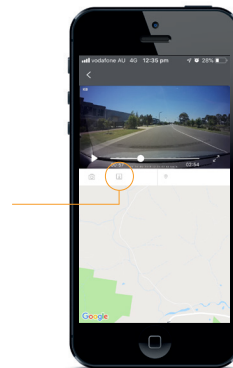
1. Gallery (from the Camera SD card)
2. Capture button
3. Camera Settings
4. Full screen
5. Mic ON / OFF
6. Recording video resolution



Downloading Videos

You can download the video/photo from the camera gallery to your smartphone by simply clicking the download button below.

These videos will appear under the local gallery in the app.



Voice prompt

To enable/disable the voice notification for below features.

- GPS
- Collision Capture
- Phone Capture
- Gesture Capture
- Parking

Connection Verification

If this is activated, app will require an audio verification code from camera to establish the connection.

Clips

Automatically saves 5 seconds video before and after a photo is being taken.

Parking Monitor

If this is activated, the camera will record at 1 fps when the car is parked.

Recording Voice

This will enable/disable the voice recording.

Gesture Capture

In these settings, you can also customise the Hands Free Control function to register your hand gesture from different lengths.

Video Resolution

To change the video resolution.

G-Sensor Sensitivity

Time Synchronization

This will sync the time with the phone update.

Volume

To adjust the camera speaker volume.

Card Storage Management

To see the details of card usage and reformat the SD card.

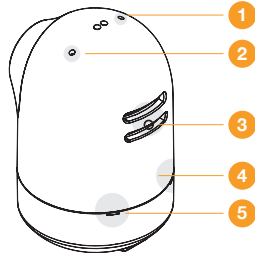
Version

To see the camera firmware version.

Disconnect Dash Camera

R50 Dash Camera

CPU	Hisilicon
Image Sensor	Panasonic CMOS
Lens	6-Glass Elements
FOV	156°
WiFi	2.4GHz
G-sensor	Three Axis
Video Information	1920x1080 30FPS
Audio Information	8KHz, 2 Channels
Photo Information	1920x1080 JPG
Storage	Class 10 MicroSD Max 64GB



- 1. Reset
- 2. Microphone
- 3. Speaker
- 4. LED
- 5. LED

LED Indicators:
 Red: Flashing when recording
 Green: Connected WiFi

Visit www.kaiserbaas.com/support or email helpdesk@kaiserbaas.com for support. For the complete user guide, visit www.kaiserbaas.com

KAISER BAAS