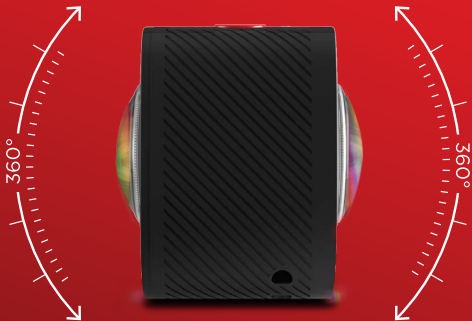


ENGLISH

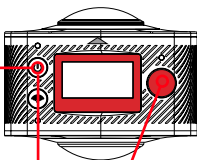
## QUICK START GUIDE



**X360**  
DUAL LENS VR CAMERA

## Getting Started

- 1 **Hold** the **POWER** button for 3 second to turn the X360 ON.
- 2 **Video Mode** is selected by default. Press the **Record** Button to start recording.
- 3 To toggle between **Video** and **Photo** Mode, click the **Power** button.



*Note: Before using the X360 for the first time it is recommended that you fully charge the battery. It takes approximately 5 hours to fully charge.*

## Product Diagram

A Power Button (Mode)

B Power Indicator

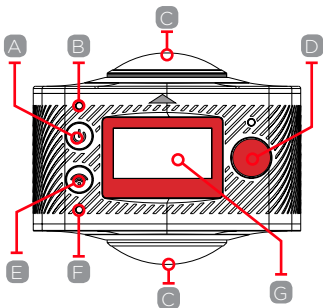
C Lens

D Record Button (OK Button)

E Wi-Fi Button (Menu, Scroll)

F Wi-Fi Indicator

G Display



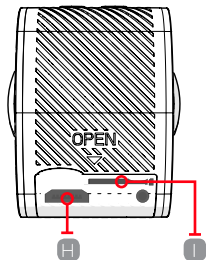
Top View

## Product Diagram

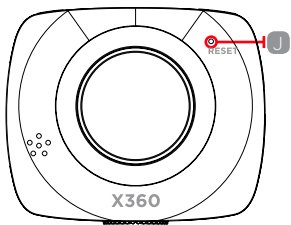
H Micro USB

I Micro SD card

J Reset Button



Right View



Front View

## Format your Memory Card

Insert the Micro SD Card\*

A Class-6 or Class-10 Micro SD Card up to 32GB is required. The X360 will not support a Micro SD card below class 6. There is only one correct way to insert the Micro SD Card into the slot. Do not force the card into the card slot, as it may damage both the X360 and the Micro SD Card.

It is recommended that you format new cards or cards that have been previously used in other devices. To format the Micro SD card:

- Turn the X360 on, enter the Setup menu by holding the **Wi-Fi** button.
- Use the **Wi-Fi** button to Scroll down and select the **Format** option using the **Record** button.
- Scroll using the **Wi-Fi** button, select **Yes** and press **Record** button.
- **Hold** the **Wi-Fi** button to exit the menu.

*NOTE: Formatting the card will permanently delete contents of the card. Be sure to save any important files.*

*\* Micro SD cards are also called TF cards.*

## Upload to YouTube & Facebook

YouTube and Facebook support uploading and playback of 360° interactive videos. In order to upload a 360° video file, you'll need to convert the spherical video file to panoramic video through the X360 Video Processing Tool application.

