

kaiser baas™



HD Media Hub User Guide

# CONTENTS

Safety precautions	2
What's in the box	3
Remote diagram	4
Product diagram	6
Setup HD Media Hub	7
Using your HD Media Hub	8
Alternative operation method	9
Adjusting your settings	9
Product specifications	10
Hardware specifications	10
Frequently Asked Questions	11
Contact us	12

## SAFETY PRECAUTIONS

Before using the HD Media Hub, please ensure you read and understand all the safety precautions below.

Do not attempt to open the case or modify it in any way, as this will void your warranty. Maintenance and repairs should only be performed by Kaiser Baas.

Keep the HD Media Hub away from water and other liquids. Do not use wet hands, when using the HD Media Hub as this may cause the unit to malfunction.

Keep the HD Media Hub away from direct sunlight and heat sources.

HD Media Hub may become slightly warm during use. This does not indicate a malfunction.

Do not place heavy objects on the HD Media Hub, as this may cause it to malfunction.

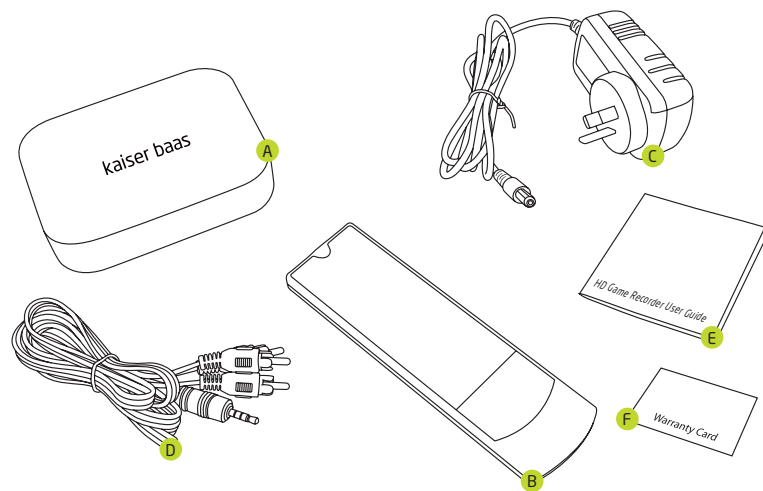
Do not dispose of the unit via conventional domestic waste.

Use the provided power cable, do not substitute another cable.

## WHAT'S IN THE BOX

Please ensure the product package has all the following contents:

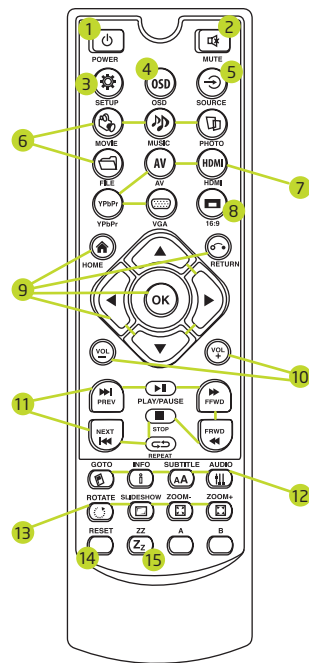
- A** HD Media Hub
- B** Remote control
- C** Power supply
- D** AV cable
- E** User guide
- F** Warranty card



## REMOTE DIAGRAM

- 1 POWER**  
Turn the HD Media Hub on and off
- 2 MUTE**  
Mute the volume
- 3 SETUP**  
Adjust the settings on your HD Media Hub
- 4 OSD**  
The On-Screen Display, for adjusting several different functions
- 5 SOURCE**  
The source connecting the HD Media Hub to the television
- 6 MOVIE, MUSIC, PHOTO, FILE**  
Changes HD Media Hub's play/display mode
- 7 AV, HDMI, YPbPr, VGA**  
Change between different sources
- 8 16:9**  
Adjust the screen size
- 9 HOME, RETURN, ARROW KEYS, OK**  
Select options on the menu screen
- 10 VOL-, VOL+**  
Adjust the volume
- 11 PLAY/PAUSE, STOP, REPEAT, PREV, NEXT, FFWD, FRWD**  
Video controls
- 12 GOTO, INFO, SUBTITLE, AUDIO**  
Video options
- 13 ROTATE, SLIDESHOW, ZOOM -, ZOOM +**  
Photo options
- 14 RESET**  
Return to start screen
- 15 ZZ**  
Adjust sleep mode

## REMOTE DIAGRAM



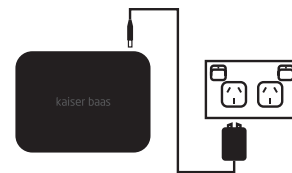
## PRODUCT DIAGRAM



## SETUP HD MEDIA HUB

### Step One: Plugging Into Mains Power

Connect the power supply from the back of the HD Media Hub into a power point.



### Step Two: Connect Media Source

You can connect most USB flash drives (also known as memory sticks), SD memory cards or portable hard drives to the HD Media Hub.

Connect your USB or SD card to the appropriate input socket on the HD Media Hub.

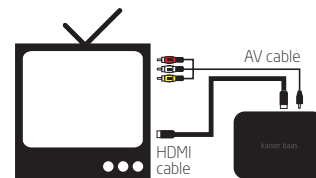


### Step Three: Connecting To Television

**AV cables:** with the supplied AV cable, connect from your HD Media Hub AV port to the correct television AV inputs and then turn the HD Media Hub on.

OR

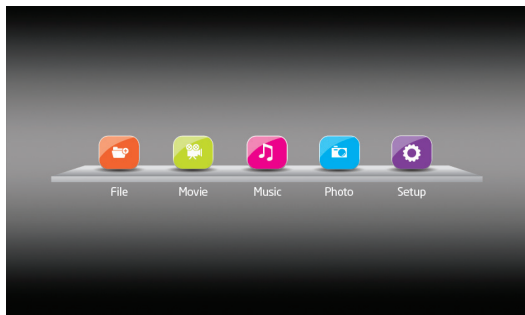
**HDMI\*:** with a HDMI cable connect from your HD Media Hub HDMI port to the correct television HDMI input and then turn the HD Media Hub on.



\*HDMI cable not provided.

## USING YOUR HD MEDIA HUB

You can browse your files by selecting any of the icons on the home screen



**File:**  
browse files of any type

**Movie:**  
search for video files

**Music:**  
search for audio files

**Photo:**  
search for pictures

**Setup:**  
HD Media Hub settings

The next screen will display options from which memory source you want to display/play your files. Select which memory source you have inserted.

Now, search for the desired file by scrolling through the list.

**TIP!** You can do this from anywhere. For example, if you're browsing in the **Movie** section and you're actually looking for music, you can press the **Music** button on the remote control to find music files, rather than going back to the home screen.

The rest of the remote control's mode buttons – **Movie**, **Photo**, etc – work like this, too.

## ALTERNATIVE OPERATION METHOD

You can play/display any type of file on the HD Media Hub by just selecting the **File** icon:

1. Select **File** icon on the home screen. To select, press OK.
2. Select memory source – you should see all files stored on memory source here. To select, press OK.
3. On the remote, select either **Music**, **Movie** or **Photo** to put the HD Media Player in the correct mode. To select, press OK. The current mode will be displayed on the top left of your screen.
4. Select the file you wish to play/display by pressing OK.

## ADJUSTING YOUR SETTINGS

You can adjust the settings on your HD Media Hub by pressing **SETUP** on your remote control.

Alternatively, you can select **SETUP** on the home screen, by highlighting it and pressing OK.

## PRODUCT SPECIFICATIONS

Video	MPEG1	DAT, MPG, MPEG (up to 720*576)
	MPEG2	MPG, AV, VOB, TS/TP, M2TS (up to 1080p)
	MPEG4 (Xvid)	MKV, AVI, MP4, M2TS (up to 1080p)
	H.264	MKV, AVI, MP4, MOV, M2TS, TS/TP (up to 1080p)
	WMV9/VC-1	MKV, AVI, MP4, MOV, M2TS, TS/TP (up to 1080p)
	Real Video	RM/RMVB (up to 720p)
	MJPEG	AVI (up to 1080p)
	FLV	FLV (up to 1080p)
Audio	MP3 / WMA / WAV / OGG / AAC / APE / FLAC / AC3 / DTS	
Picture	JPEG / BMP / PNG / GIF	
Subtitles	SRT / SMI / SSA	
Product Code	KBA03038	
APN	9 326903 003629	

## HARDWARE SPECIFICATIONS

Video output	AV (PAL/NTSC)/HDMI (480P, 720P, 1080i, 1080P)
Audio output	Audio L/R HDMI (Stereo)/S/PDIF
Hard disk	FAT/FAT32/NTFs/exFAT
LED	HDMI/AV output
IR	Receive signals from remote control
Size	120 x 90 x 25 mm
USB OTG	2* USB2.0 host
Memory card	SD/MMC
Power	DC 5.6V/2A

## FREQUENTLY ASKED QUESTIONS

### Q. The HD Media Hub is not responding. Why?

A. It could be loading data from your media source, which can take a few moments. If it continues to not respond, disconnect the power cable, reconnect the HD Media Hub and it switch back on.

### Q. There is no picture on screen. Why?

A. Ensure the power cable, AV or HDMI cable is connected correctly. Remove the and reinsert the SD card, drive or USB stick. Check the television source option is correct to display the HD Media Hub.

### Q. Why can't I play my movie file?

A. Some codecs or file formats are not supported. Double check the list of supported video formats on page 10.

### Q. How can I adjust the subtitles?

A. You can adjust subtitles by pressing OSD on your remote. In some cases, videos downloaded from the internet come with in-built subtitles that cannot be changed.

### Q. How do I play a photo slideshow?

A: Pressing the photo-options remote buttons will allow you to rotate photos, zoom in or out, or view them as a slideshow.

### Q: I cannot play/display the selected file. Why?

A: Check, on the top left of your screen, that you have the HD Media Hub in the correct mode for playing/displaying your file. After selecting your memory source, you can change the mode by selecting either the **Music**, **Movie** or **Photo** buttons on the remote control.

## FREQUENTLY ASKED QUESTIONS

**Q: Why don't my File, Music, Movie, Photo and Setup buttons work on my remote control?**

**A:** These buttons will work to change modes only after you have entered one of these options from the home screen via the arrow buttons on the remote control.

**Q: The HD Media Hub is on, but I can't see any display on my TV.**

**A:** Unplug the power cable, wait a few seconds, and plug it back in.

## CONTACT US

Need further assistance? Please visit:

[www.kaiserbaas.com](http://www.kaiserbaas.com)

Or email:

[helpdesk@kaiserbaas.com](mailto:helpdesk@kaiserbaas.com)



kaiser baas™